

**TerraMark** is a regional professional geospatial consulting firm providing services in land surveying, geographic information systems, 3-D laser scanning and digital mapping. We are an employee owned and operated corporation registered in the State of Georgia, having supported both public and private clients since December 2002. Our leadership includes professional engineers, registered land surveyors and certified GIS professionals. **TerraMark** is proud of the business relationships we have forged with the following clients:

- **ALSTON & BIRD LLP** Atlanta, GA <sup>5</sup>
  - **ARCADIS US** Highlands Ranch, CO <sup>1</sup>
  - **ARCHER WESTERN CONTRACTORS LLC** Atlanta, GA
  - **AYRES ASSOCIATES** Eau Claire, WI <sup>1</sup>
  - **BALFOUR BEATTY US** Dallas, TX <sup>2</sup>
  - **BANKS COUNTY** Homer, GA
  - **BAKER & MCKENZIE** Chicago, IL <sup>5</sup>
  - **BATSON - COOK CO** West Point, GA <sup>2</sup>
  - **BAXTER INTERNATIONAL** Deerfield, IL <sup>3</sup>
  - **BEAZER HOMES** Atlanta, GA
  - **BRASFIELD & GORRIE LLC** Birmingham, AL <sup>2</sup>
  - **BROWN AND CALDWELL** Walnut Creek, CA <sup>1</sup>
  - **CATAMOUNT CONSTRUCTORS INC** Lakewood, CO <sup>2</sup>
  - **CBRE GROUP INC** Los Angeles, CA <sup>3</sup>
  - **CH2M HILL** Englewood, CO <sup>1</sup>
  - **CHICK-FIL-A** Atlanta, GA
  - **CITY OF BROOKHAVEN** Brookhaven, GA
  - **CITY OF DUNWOODY** Dunwoody, GA
  - **CITY OF PEACHTREE CORNERS** Peachtree Corners, GA
  - **CITY OF ROSWELL** Roswell, GA
  - **CLARK PATTERSON LEE** Rochester, NY <sup>1</sup>
  - **COBB COUNTY - MARIETTA WATER AUTHORITY** Marietta, GA
  - **COCA - COLA** Atlanta, GA <sup>3</sup>
  - **COOPER CARRY INC** Atlanta, GA <sup>1</sup>
  - **COUSINS PROPERTIES INCORPORATED** Atlanta, GA <sup>4</sup>
  - **CROWDER CONSTRUCTION CO** Charlotte, NC <sup>2</sup>
  - **CSX** Jacksonville, FL <sup>3</sup>
  - **C W MATTHEWS CONTRACTING CO INC** Marietta, GA
  - **CVS HEALTH** Woonsocket, RI <sup>3</sup>
  - **DELTA AIRLINES** Atlanta, GA <sup>3</sup>
  - **DLA PIPER** New York, NY <sup>5</sup>
  - **D R HORTON** Fort Worth, TX <sup>3</sup>
  - **DUKE REALTY** Indianapolis, IN <sup>4</sup>
  - **EARTH FARE** Asheville, NC
  - **EUE SCREEN GEMS STUDIOS** New York, NY
- **FORSYTH COUNTY** Cumming, GA
  - **GARNEY HOLDING CO** Kansas City, MO <sup>2</sup>
  - **GENERAL MILLS** Minneapolis, MN <sup>3</sup>
  - **GEORGIA DEPARTMENT OF NATURAL RESOURCES** Atlanta, GA
  - **GEORGIA DEPARTMENT OF TRANSPORTATION** Atlanta, GA
  - **GEORGIA TRANSMISSION CORPORATION** Tucker, GA
  - **GREENBERG TRAURIG LLP** New York, NY <sup>5</sup>
  - **HALPERN ENTERPRISES INC** Atlanta, GA
  - **HAZEN AND SAWYER PC** New York, NY <sup>1</sup>
  - **HILTON WORLDWIDE HOLDINGS** McLean, VA <sup>3</sup>
  - **HIGHWOODS PROPERTIES** Raleigh, NC <sup>4</sup>
  - **HINES** Houston, TX <sup>4</sup>
  - **HKS INC** Dallas, TX <sup>1</sup>
  - **HNTB** Kansas City, MO <sup>1</sup>
  - **HOAR CONSTRUCTION LLC** Birmingham, AL <sup>2</sup>
  - **HOLDER CONSTRUCTION CO** Atlanta, GA <sup>2</sup>
  - **HOME DEPOT** Atlanta, GA <sup>3</sup>
  - **JE DUNN CONSTRUCTION GROUP** Kansas City, MO <sup>2</sup>
  - **JONES LANG LASALLE** Chicago, IL <sup>3</sup>
  - **KAJIMA BUILDING & DESIGN GROUP INC** Atlanta, GA <sup>2</sup>
  - **KATTEN MUCHIN ROSENMAN LLP** Chicago, IL <sup>5</sup>
  - **KILPATRICK TOWNSEND & STOCKTON LLP** Atlanta, GA <sup>5</sup>
  - **KIMLEY-HORN AND ASSOCIATES** Cary, NC <sup>1</sup>
  - **KING & SPALDING LLP** Atlanta, GA <sup>5</sup>
  - **KOHL'S** Menomonee Falls, WI <sup>3</sup>
  - **KROGER** Cincinnati, OH <sup>3</sup>
  - **LIBERTY MEDIA** Englewood, CO <sup>3</sup>
  - **LEO A DALY** Omaha, NE <sup>1</sup>
  - **LORD AECK SARGENT** Atlanta, GA <sup>1</sup>
  - **LOWE'S** Mooresville, NC <sup>3</sup>
  - **MANHATTAN CONSTRUCTION GROUP** Tulsa, OK <sup>2</sup>
  - **MARRIOTT INTERNATIONAL** Bethesda, MD <sup>3</sup>
  - **MARTIN MARIETTA** Raleigh, NC <sup>3</sup>
- **MCDONALD'S** Oak Brook, IL <sup>3</sup>
  - **MUNICIPAL ELECTRIC AUTHORITY OF GEORGIA** Atlanta, GA
  - **NCR** Duluth, GA <sup>3</sup>
  - **NEW SOUTH CONSTRUCTION CO INC** Atlanta, GA <sup>2</sup>
  - **NOVA ENGINEERING AND ENVIRONMENTAL** Kennesaw, GA <sup>1</sup>
  - **O'BRIEN & GERE** Syracuse, NY <sup>1</sup>
  - **OLIVER MCMILLAN** San Diego, CA
  - **OLSHAN PROPERTIES** New York, NY <sup>4</sup>
  - **PARSONS** Pasadena, CA <sup>1,2</sup>
  - **PERKINS+WILL** Chicago, IL <sup>1</sup>
  - **PILGRIM'S PRIDE** Greeley, CO
  - **POND & CO** Norcross, GA <sup>1</sup>
  - **PUBLIX SUPER MARKETS** Lakeland, FL <sup>3</sup>
  - **RACETRACE PETROLEUM** Atlanta, GA
  - **RAILWORKS CORP** New York, NY <sup>2</sup>
  - **REGENCY CENTERS** Jacksonville, FL <sup>4</sup>
  - **REGIONS FINANCIAL** Birmingham, AL <sup>3</sup>
  - **RITE AID** Camp Hill, PA <sup>3</sup>
  - **SCHNABEL ENGINEERING INC** Glen Allen, VA <sup>1</sup>
  - **SEYFARTH SHAW LLP** Chicago, IL <sup>5</sup>
  - **SKANSKA USA** New York, NY <sup>2</sup>
  - **SOUTHERN** Atlanta, GA <sup>3</sup>
  - **STATE FARM INSURANCE CO** Bloomington, IL <sup>3</sup>
  - **T D FARRELL CONSTRUCTION INC** Alpharetta, GA <sup>2</sup>
  - **THE BECK GROUP** Dallas, TX <sup>1,2</sup>
  - **THE WHITING - TURNER CONSTRUCTION CO** Baltimore, MD <sup>2</sup>
  - **TROUTMAN SANDERS LLP** Atlanta, GA <sup>5</sup>
  - **US AIR FORCE** Washington, DC
  - **WADE TRIM** Detroit, MI <sup>1</sup>
  - **WALGREENS** Deerfield, IL <sup>3</sup>
  - **WEINGARTEN REALTY INVESTORS** Houston, TX <sup>4</sup>
  - **WELLS FARGO** San Francisco, CA <sup>3</sup>
  - **W H BASS INC** Johns Creek, GA <sup>2</sup>
  - **WHOLE FOODS MARKET** Austin, TX <sup>3</sup>
  - **WINTER CONSTRUCTION** Atlanta, GA <sup>2</sup>
  - **WOODARD & CURRAN** Portland, ME <sup>1</sup>



# TerraMark Geospatial



<sup>1</sup> ENR Top Design Firms      <sup>2</sup> ENR Top Contractors      <sup>3</sup> Fortune Top 1000      <sup>4</sup> NREI Top Real Estate Firms      <sup>5</sup> Vault Top Law Firms

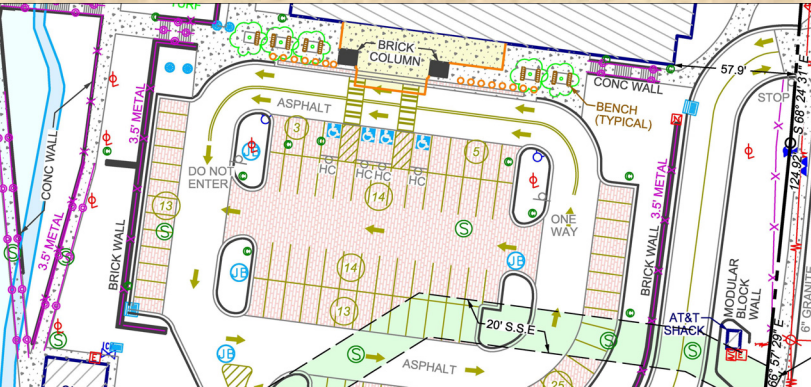


Services

- ALTA / ACSM Land Title Surveys
- As-built Surveys
- Building Information Modeling (BIM)
- Boundary / Cadastral Surveys
- Cartography (GA DOT qualified)
- Construction Surveys
- Data Capture and Conversion for GIS
- Digital Terrain Modeling
- Engineering Surveying (GA DOT qualified)
- Facilities Management GIS
- Geodetic Surveying (GA DOT qualified)
- GIS Consulting / Implementation
- Land Surveying (GA DOT qualified)
- Planimetric and Topographic Mapping
- Thematic Mapping
- 3-D Laser Scanning
- Utility Inventory Mapping and Inspections
- Volumetric Surveys

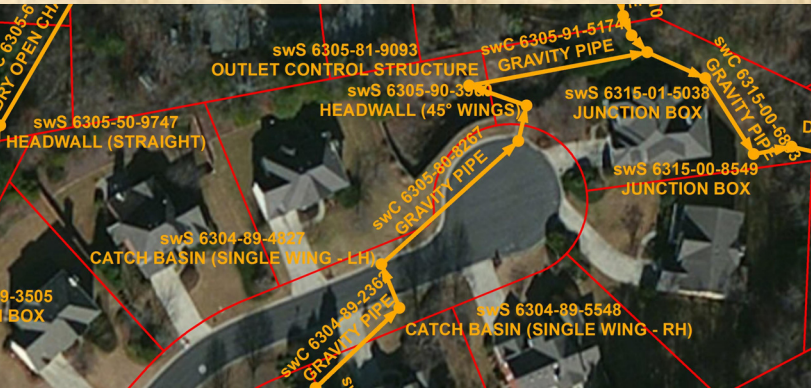
Surveying

We offer a wide variety of conventional land surveying services. Our crews operate daily, equipped with state-of-the-art total stations, GPS receivers, robotic stations and data collectors. The office personnel consists of project managers, spatial analysts and technicians and research specialists. We capitalize of each individual’s experience and place them on the appropriate project team which best meets our clients needs. TerraMark’s QC/QA procedures provide direct communication between field staff, office employees and client representatives; ensuring the best possible product for each project.



Geographic Information Systems

Geographic Information Systems (GIS) provide an accurate, efficient and cost-effective solution to manage spatial data. TerraMark’s GIS department offers a broad range of GIS services. Because we are a multi-faceted geospatial firm, we understand the use of GIS technology as applied to the architectural, communication, construction, engineering, local government, public safety, public works, real estate, telecommunications, transportation, urban planning, utilities, and water resources market sectors.



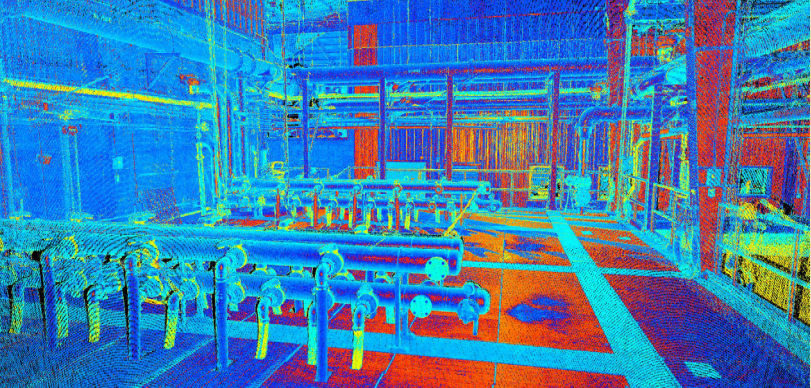
Mapping

TerraMark’s digital mapping is a service where we collect data from an assortment of sources and then compile and format that information into digital maps. These maps may range from very simple to extremely complex, depending upon our client’s requirements and proposed applications. Digital map products may include three-dimensional spatial models and are created to support land planning and / or engineering scenarios, especially routing studies and facilities management.



3-D Laser Scanning

TerraMark uses the RIEGL family of 3-D terrestrial scanners which provide high speed, non-contact data acquisition. The high-accuracy, time-of-flight, narrow focus infrared laser beam provides multiple target and superior measurement capabilities. The scanner allows us to deliver increased accuracy and detailed survey data for topography, as-built construction, building information modeling (BIM), GIS mapping, land surveying, land form monitoring, civil engineering, asset / facilities management, public works and public safety / forensic applications.



Focus

What motivates us to continually pursue innovative and advanced techniques to deliver state-of-the art geospatial information? It’s you, our clients. By understanding the challenges you face, we can offer products and services that deliver the results you require.

We tailor our services to your individual needs, examine cost saving and technical possibilities, and devise project work flows that apply technology effectively and efficiently.

We believe that when we are successful in meeting your goals, then our business will flourish along with yours.



Marquee Projects

- Alliance Center Atlanta, GA
- Baxter Research Social Circle, GA
- Buckhead Atlanta Atlanta, GA
- College Football Hall of Fame Atlanta, GA
- Delta Airlines Flight Operations Center Atlanta, GA
- Hickory Log Creek Dam and Reservoir Canton, GA
- Roswell City Green Roswell, GA
- State Farm Campus Dunwoody, GA
- SunTrust Park Complex Atlanta, GA
- World of Coca-Cola Atlanta, GA

Leadership

- William C. “Bill” Wohlford, Jr. PE, RLS (President)
- Paul B. Cannon, RLS (Operations Manager)
- Scott E. Burson, RLS (Surveying Manager)
- John C. Blount, RLS (Mapping Manager)
- Steven P. “Steve” Pohlmann, GISP (GIS Manager)
- Kevin W. Hardy, LSIT, GISP (3-D Laser Scanning Manager)
- Joshua D. “Josh” Wilson, (CADD Manager)